



FV size dryer & light-finisher
unit for flexo plates



ThermoFlexX



Individually Controlled Dryer Sections

Independent heaters, sensor control and ventilation for all 6 dryer sections. This ensures exact temperature and timings for all plates. Only required stations need to be active for economic operation if only a few sections are required.

Precision Light Finishing

UVA and UVC lamps are monitored and controlled to ensure ultimate consistency from plate to plate. Sensors test intensity before each plate and tubes are monitored to ensure timely replacement when necessary. A record of lamp performance can be available for every plate for ultimate QC tracking.

ThermoFlexX Monitoring

All critical information such as motor current, controllers, operating conditions and working temperatures are monitored. This information can be stored and made available for total plate QC records. ThermoFlexX ProServeX provides a cloud-based, constant monitoring service of all key components throughout the range. A brand-new level of predictive maintenance with online support is available. The need for physical service-interventions is minimised.

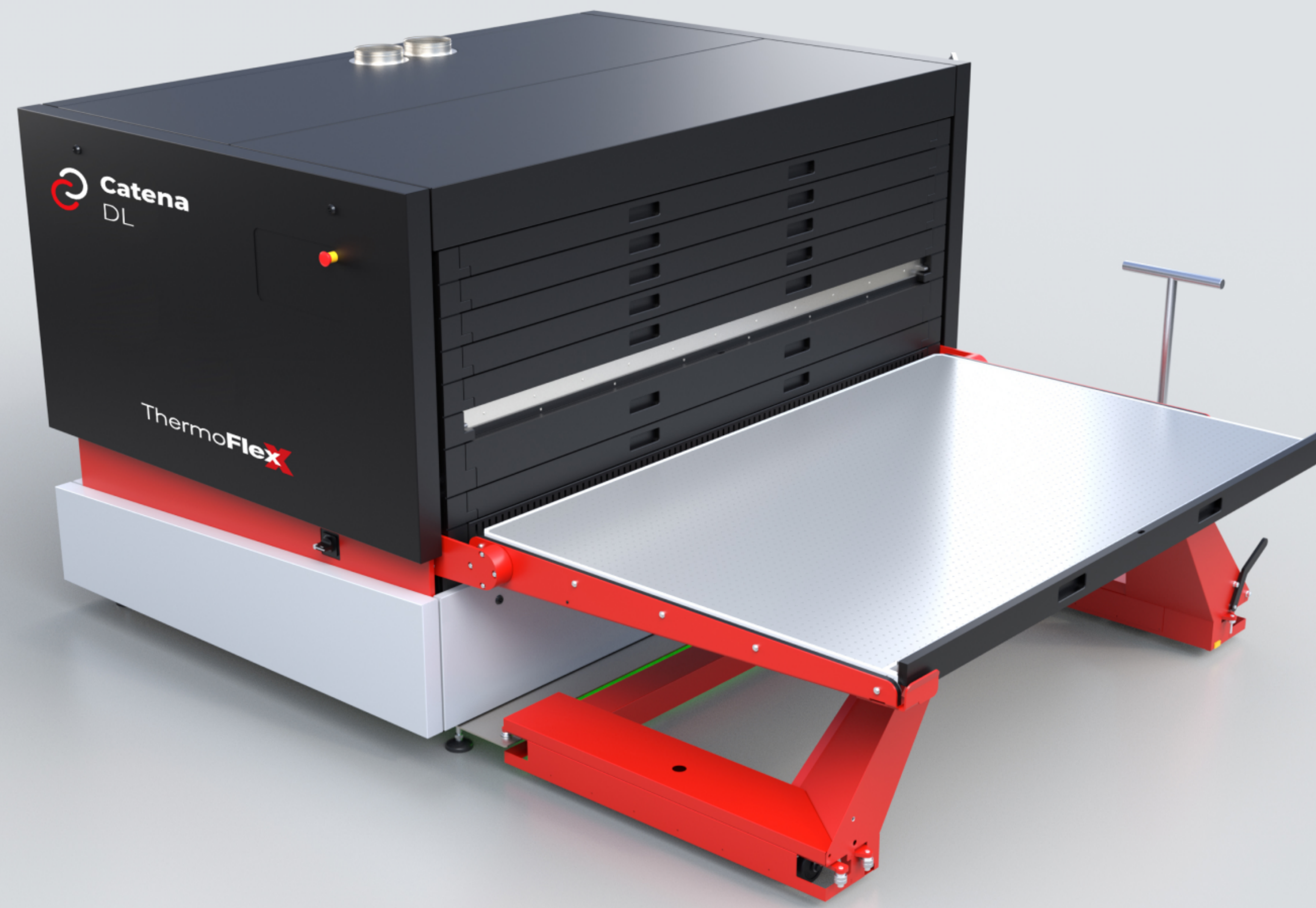
ThermoFlexX Graphical User Interface

New levels of information and plate production progress are displayed on stylish monitors on each Catena unit. ThermoFlexX Smart communications integrates imager, LED exposure, washer and dryer.



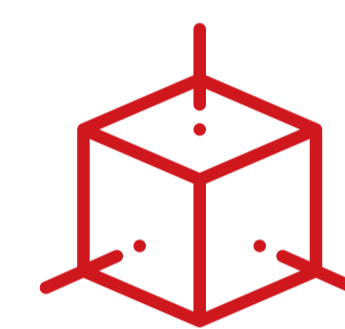
Operator Safety and Convenience

A unique plate lift and a carrier tray for each section makes it easy for a single operator to handle the largest plates. All drawers can easily be used with no strain. With a Catena-W wash-out unit, the shuttle ensures easy transport of plates for loading into the dryer section via the lift. This avoids both the risk of damage or the operator having to handle solvent wet plates.



Shuttle is included in the Catena W

Technical specifications



DIMENSIONS MM/INCH

width 2520mm, 3003mm inc. monitor (99/118")
 depth 1687mm, 3150mm inc. lift arms (66/124")
 height 1623mm, 1888mm lift arms up (64/74")

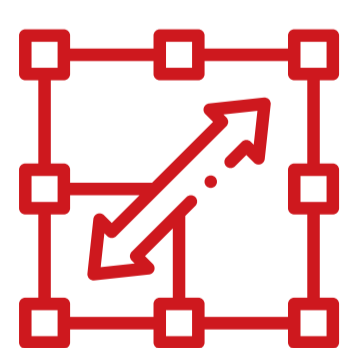
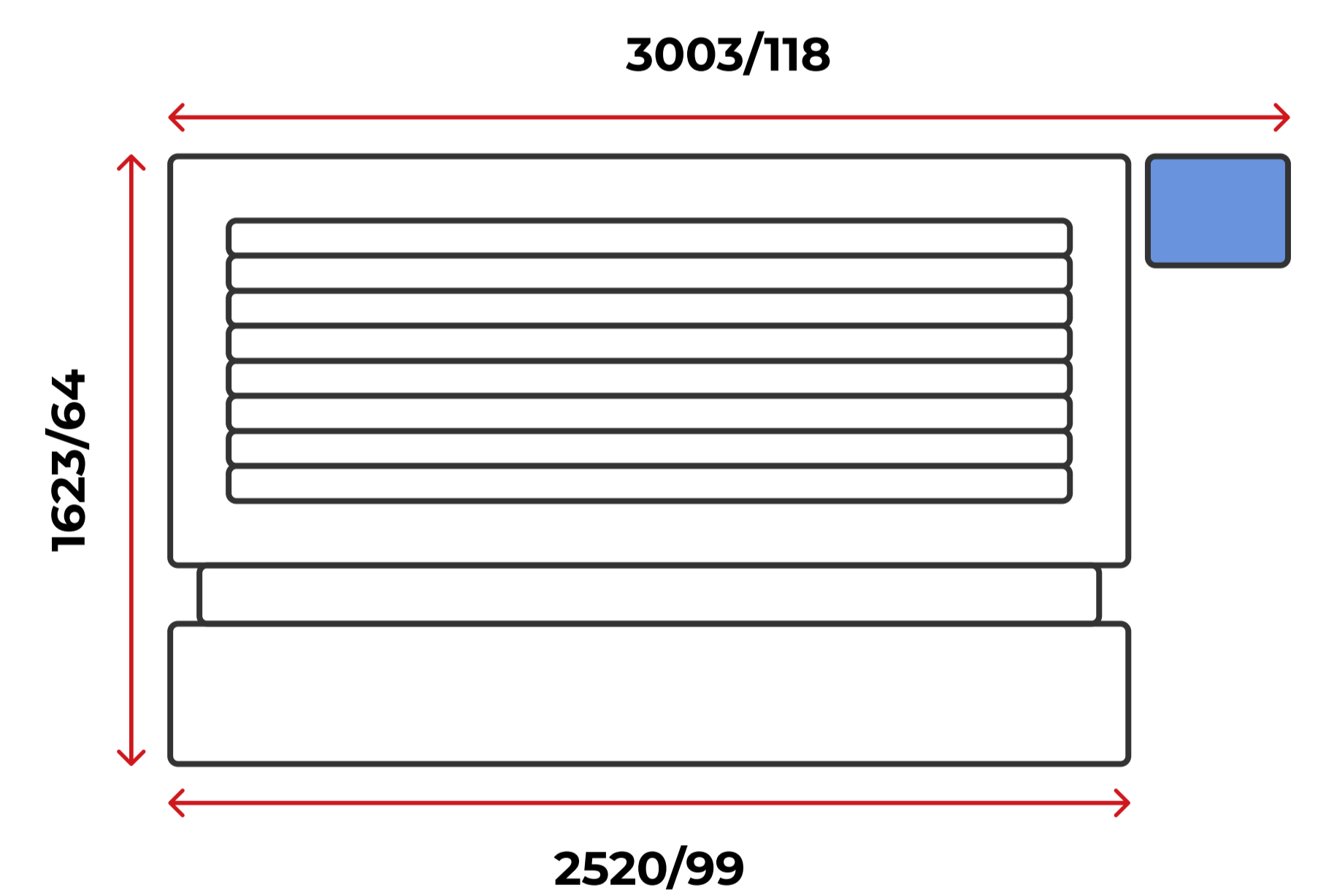
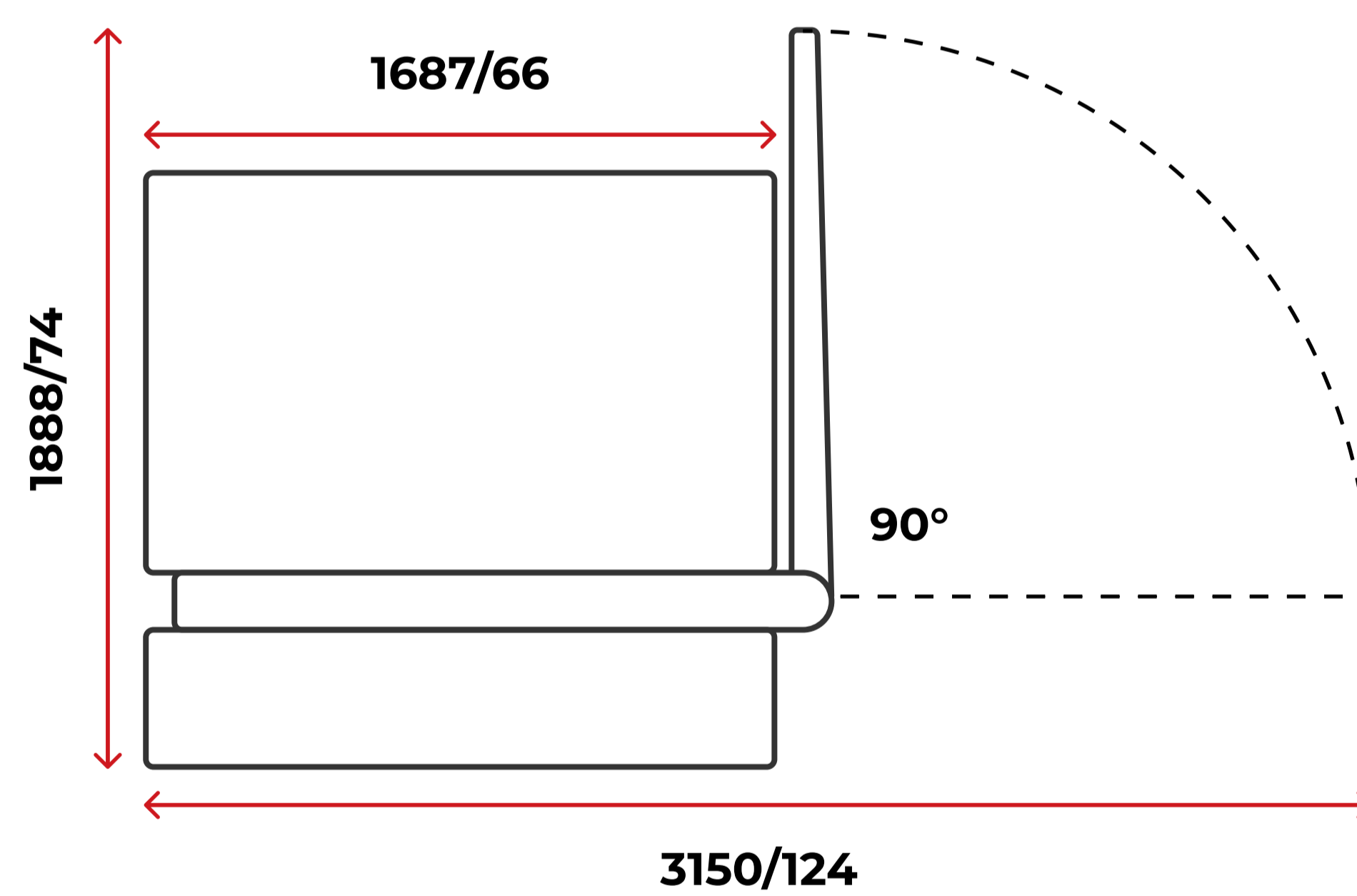
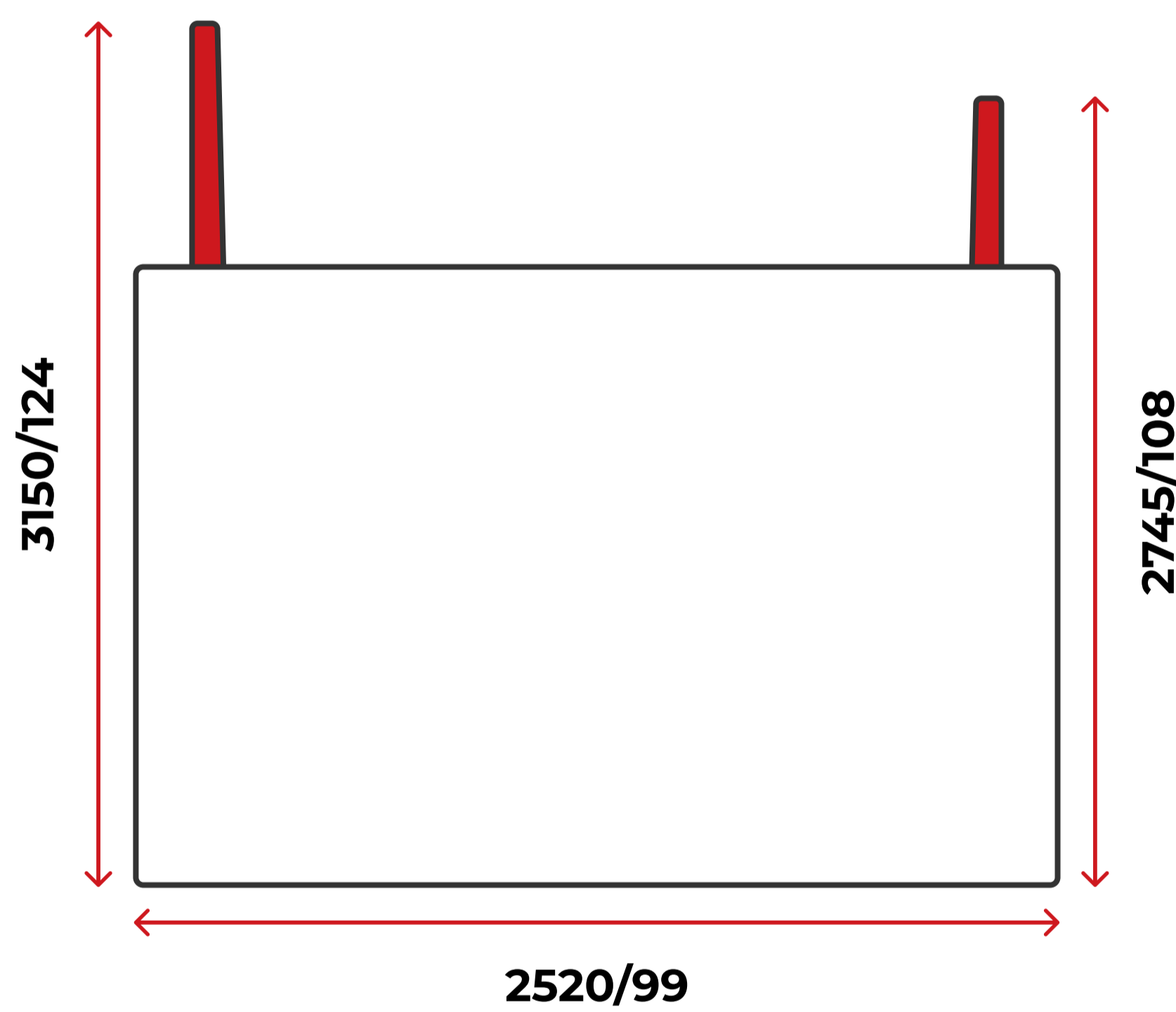


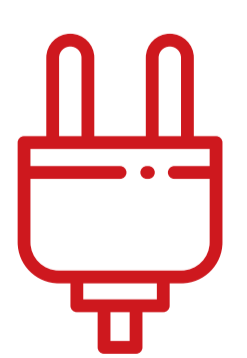
PLATE SIZE

Max 1320x2032mm/52x80"



PLATE THICKNESS

Max 7mm/0.276"



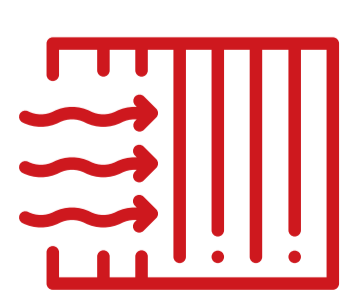
ELECTRICAL

380V 3ø N+PE 50 / 60Hz 20A



WEIGHT

1800kg /3960lbs



EXTRACTION

2x160mm



PACKED DIMENSIONS

2118x2770x2060mm / 83x109x81"



FV size dryer & light-finisher
unit for flexo plates

A large, intricate graphic in the background consisting of many overlapping, thin, reddish-brown lines that form a complex, circular, star-like pattern. The lines are arranged in a way that creates a sense of depth and movement, resembling a stylized sunburst or a complex geometric design.

ThermoFlexX

www.thermoflexx.com

+32 57 22 13 50

info@thermoflexx.com

Xeikon Prepress NV Oostkaai 50, 8900 Ieper Belgium